



watchgas[™]
detection

SST RANGE[™] 

Catalogue

we watch gas where you can't

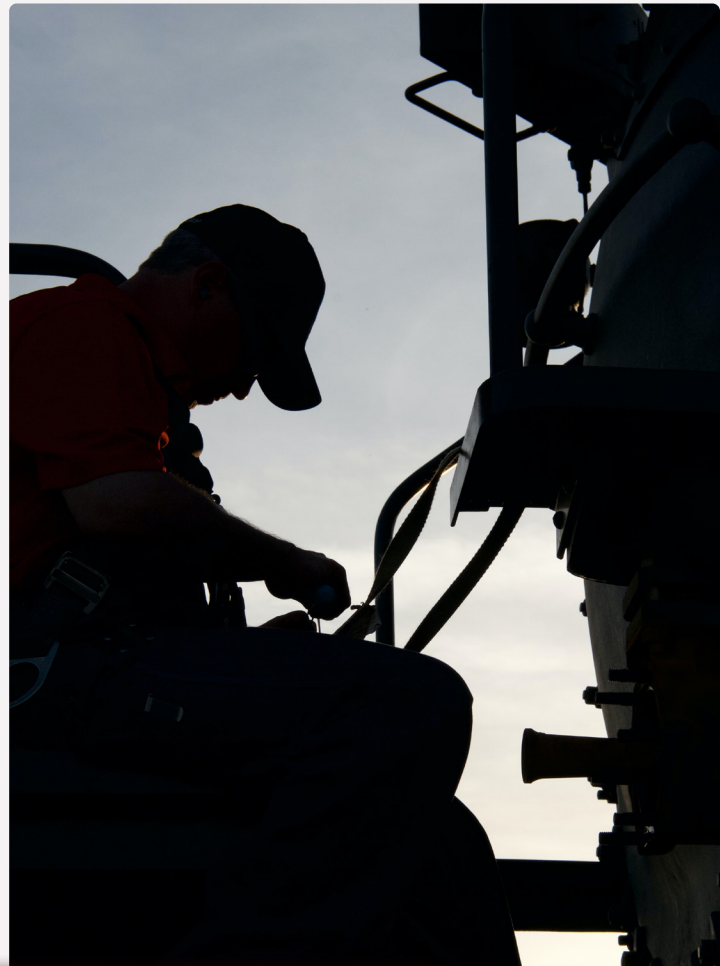
CONTENTS

| | |
|---|-----------|
| Our story | 3 |
| SST1 Single Gas | 4 |
| SST1 Serviceable Single Gas Detector | 7 |
| SST4 Four gas device | 10 |
| SST Dock | 13 |
| Compliance Kiosk | 15 |

OUR STORY

We are WatchGas, We Watch Gas where you can't. We strive to be the best at everything we do, from the products we innovate to the way we work and support our partners. We believe by focusing on these core values whilst other manufacturers focus on profit will make us become a worldwide brand for all your gas detection needs. Established in 2018 in Rotterdam, Netherlands,

WatchGas is a manufacturer of Gas Detection Devices and after the success of the first phase has now developed its own range of portable devices to serve a global market from 2023. Our passion is with gas detection and our dedication is with keeping you safe. We strive to make sure We Watch Gas so you come home safely every day.



“OUR MISSION IS TO BUILD THE BEST PRODUCTS, SHARE OUR KNOWLEDGE OF THE GAS DETECTION INDUSTRY WHILST PUTTING OUR CUSTOMERS AT THE HEART OF ALL WE DO.”

OUR KEY PILLARS

#PARTNERSHIP #TRUST
#SERVICE #KNOWLEDGE
#TEAMWORK #INNOVATION
#HARDWORK #SUPPORT
#FUN

watchgas
detection



IP 67/68

95 DB @ 30 cm

100 events

Fastest T_{90}

NFC connection

2 to 3 years battery life

25% bigger screen
to the next best alternative

The new standard in single gas

SST1 SINGLE GAS

Maintenance free 2 & 3 year – H₂S / SO₂ / CO / O₂



APPLICATIONS

- Oil and gas upstream
- Oil and gas downstream
- Contractors
- Site maintenance
- Turn arounds and shutdowns
- Boiler rooms
- Steel plants
- Laboratories
- Shipping
- Power generation
- Mining

FEATURES AND BENEFITS



EASY SETUP

Near Field Communication built in as standard allows for a wide range of solutions depending on your needs. Simply pair with the WatchGas App to manage your fleet, bump, calibrate, assign or download event logs. See Tap & Go application note for more information on the benefits of NFC.



SENSOR

Using the latest in Solid State Technology our H₂S, CO, O₂, & SO₂ offer stability and reliability over extreme temperatures and conditions. With its smaller form factor and the removal of traditional Electrolyte allows for a new standard in the single gas market.



DISPLAY

With the largest LCD in its category the SST1's display shows months remaining.



RUGGED

Designed with the harshest environments in mind the SST1 offer an Ingress Protection rating of 67-68. The casing is a double shot housing that gives extra robustness while not compromising on quality. The screen protectors located either side of the display are to protect the LCD from scratching and is required due to the smaller sensor profile.



ALERT

As a safety device it is essential that the device clearly notifies users of the presence of gas. The SST1 has a 95dB alarm at 30 centimetres which is the industry standard and is required in loud industrial environments. High and Low alarms can be configured by the customer and automatically updated directly on the device or through the SST Dock.



COST EFFECTIVE

Designed to be zero maintenance and remove the need for calibration the SST1 allows for 2 or 3 years of full up time. No sensor or battery replacements means no hidden costs and a one-year shelf life it is perfect for turn arounds and contractors.

The SST1 single gas detectors provides up to three years maintenance-free operation and is available in H₂S, SO₂, CO or O₂ models. With its simple design it is perfect for users that are looking for ultimate protection while being easy to use, durable and cost effective. Simply turn on the device and it runs 24/7 for 2 to 3 years — no calibration, no battery replacement no charging and no stress. The device is easy to use and reduces the need for extensive training. The SST1 coupled with the SST Dock allows for the fastest bump testing on the market and makes fleet management extremely simple.

CONFIGURABLE OPTIONS

- Configuration of high and low alarm set points using SST-Dock or the WatchGas App
- Gas reading in remaining months
- User settable bump test reminder
- Compliance check

SST1 SPECIFICATIONS

| | |
|---------------------------------------|---|
| Size | 83 × 49 × 20 mm (3.3 × 1.9 × 0.8 in) |
| Weight | 88 g (3.1 oz) |
| Temperature | -40 to +60°C / -40 to +140°F |
| Humidity | 5 ~ 95 %RH (Non-condensing) |
| Response time T90 | H ₂ S, CO, O ₂ : < 10 seconds SO ₂ : < 55 seconds |
| Battery life | H ₂ S, CO, O ₂ , SO ₂ : 2 years H ₂ S or CO: 3 years depending on the version |
| Event logging | Last 100 events |
| IP | IP67-68 |
| Communication | NFC |
| Shelf life | 1 year |
| Certifications & Approvals | ATEX, IECEx, UKEX II 1 G Ex ia IIC T4 Ga I M1 Ex ia I Ma 0344 Int.Safe: CL I Dv 1, Gr A,B,C,D T4 CSA C22.2 NO. 60079-0 CAN/CSA C22.2 NO 60079 UL 61010 UL60079-0, UL60079-11 safety requirements CAN/CSA-C22.2 NO 61010-1-12 Low Voltage Directive 2014/35/EU EMC Directive 2014/30/EU |
| Warranty | One year shelf life then two or three years from activation date depending on device type |

SENSOR SPECIFICATIONS

| Sensor | Gas measuring range | Low alarm level | High alarm level | Resolution |
|--|---------------------|-----------------|------------------|------------|
| 2- or 3-year detector H ₂ S | 0 - 500 ppm | 10 ppm | 15 ppm | 0.1 ppm |
| 2- or 3-year detector CO | 0 - 2000 ppm | 35 ppm | 200 ppm | 1 ppm |
| 2 year detector O ₂ | 0 - 25.0 % by vol. | 19.5 % | 23.5 % | 0.1 vol% |
| 2 year detector SO ₂ | 0 - 100 ppm | 5 ppm | 10 ppm | 0.1 ppm |

ACCESSORIES



Gas cylinder

Fixed flow regulator

External filter



SST Dock



SST1 Serviceable

The new single gas, that will *alert* you,
and is designed for
the most *extreme* environments

H₂S

CO

O₂

SO₂

CH₄S

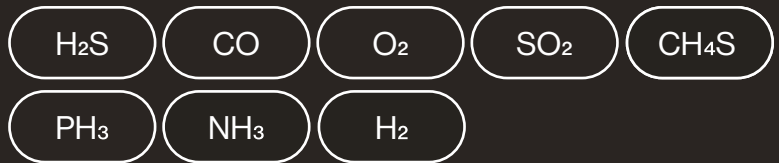
PH₃

NH₃

H₂

SST1 SINGLE GAS

Serviceable



APPLICATIONS

- Oil and gas upstream
- Oil and gas downstream
- Contractors
- Site maintenance
- Turn arounds and shutdowns
- Boiler rooms
- Steel plants
- Laboratories
- Shipping
- Power generation
- Mining

FEATURES AND BENEFITS



EASY SETUP

Near Field Communication built in as standard allows for a wide range of solutions depending on your needs. Simply pair with the WatchGas App to manage your fleet, bump, calibrate, assign or download event logs. See Tap & Go application note for more information on the benefits of NFC.



SENSOR

Using the latest in Solid Polymer Sensor Technology our different target gases, offer stability and reliability over extreme temperatures and conditions. With its smaller form factor and the removal of traditional Electrolyte is setting a new standard in the single gas market.



DISPLAY

With the largest LCD in its category the SST1's display shows the Real Time Gas Reading and TWA and STEL alarms. This allows for the user to make quicker decisions in a gas alarm environment. Bumper screens either side of the LCD provide anti scratch protection ensuring the clearest of readings.



RUGGED

Designed with the harshest environments in mind the SST1 offer an Ingress Protection rating of 67-68. The casing is a double shot housing that gives extra robustness while not compromising on quality. The screen protectors located either side of the display are to protect the LCD from scratching and is required due to the smaller sensor profile.



ALERT

As a safety device it is essential that the device clearly notifies users of the presence of gas. The SST1 has a 95dB alarm at 30 centimetres which is the industry standard and is required in loud industrial environments. High and Low alarms can be configured by the customer and automatically updated directly on the device or through the SST Dock.



SERVICEABLE

The SST1 real time monitor is a cost efficient solution for users with STEL, TWA and real time requirements. SST1 real time allows users to replace battery and sensors to maximize the lifetime of the unit. Press and hold the button for 10 sec to reset TWA/STEL for worker shift change.

The SST1 Serviceable offers one of the most cost-effective solutions on the market. With its replaceable battery and solid polymer sensor technology the SST1 offers a compact and modular design, while not compromising on its ruggedness. The SST1 Serviceable can be configured to your needs with one simple tap of the NFC and paired with the WatchGas Application. Monitoring for Low, High, STEL and TWA the SST1 will indicate any immediate risks but also the long-term exposure to toxic gases.

CONFIGURABLE OPTIONS

- Configuration of high and low alarm set points using SST-Dock or the WatchGas App
- Real Time Gas reading, TWA and STEL alarms
- User settable bump test reminder and cal reminder
- Compliance check

SST1 SERVICEABLE SPECIFICATIONS

| | |
|---------------------------------------|--|
| Size | 83 × 49 × 20 mm (3.3 × 1.9 × 0.8 in) |
| Weight | 88 g (3.1 oz) |
| Temperature | CO, H₂S, O₂ SO₂: -40°C to +60°C (-40°F to +140°F) / Others: -20°C to +50°C (-4°F to +122°F) |
| Humidity | 5 ~ 95 %RH (Non-condensing) |
| Response time T90 | H₂S, CO, O₂, PH₃ H₂: < 10 sec CH₄S: <40 sec SO₂: <55 sec NH₃: <130 sec Other sensors may vary |
| Battery life | O₂: 2 years H₂S, CO, SO₂, NH₃, H₂, PH₃, CH₄S: up to 3 years, dependent on gas alarms |
| Event logging | Last 100 events |
| IP | IP67-68 |
| Communication | NFC |
| Shelf life | 1 year |
| Certifications & Approvals | ATEX, IECEX, UKEX II 1 G Ex ia IIC T4 Ga I M1 Ex ia I Ma 0344 Int.Safe: Cl I Dv 1, Gr A,B,C,D T4 CSA C22.2 NO. 60079-0 CAN/CSA C22.2 NO 60079 UL 61010 UL60079-0, UL60079-11 safety requirements CAN/CSA-C22.2 NO 61010-1-12 Low Voltage Directive 2014/35/EU EMC Directive 2014/30/EU |
| Warranty | Instrument: 3 years Battery: 2 years based on 1 min of alarm per day Sensors: NH₃, CH₄S, PH₃: 1 year H₂S, CO, O₂, SO₂, H₂: 2 years |

NOTE: Battery lifetime is based on low power mode, depending on usage and functions they may be reduced.

SENSOR SPECIFICATIONS

| Sensor | Gas measuring range | Low alarm level | High alarm level | STEL | TWA | Resolution |
|-------------------|---------------------|-----------------|------------------|---------|---------|------------|
| H ₂ S | 0 - 500 ppm | 10 ppm | 15 ppm | 15 ppm | 10 ppm | 0.1 ppm |
| CO | 0 - 2000 ppm | 35 ppm | 200 ppm | 100 ppm | 20 ppm | 1 ppm |
| O ₂ | 0 - 25.0 % by vol. | 19.5 % | 23.5 % | — | — | 0.1 vol% |
| SO ₂ | 0 - 100 ppm | 5 ppm | 10 ppm | 5 ppm | 2 ppm | 0.1 ppm |
| NH ₃ | 0 - 100 ppm | 25 ppm | 50 ppm | 35 ppm | 25 ppm | 0.1 ppm |
| H ₂ | 0 - 1000 ppm | 100 ppm | 400 ppm | — | — | 1 ppm |
| CH ₄ S | 0 - 100 ppm | 2 ppm | 5 ppm | 1 ppm | 0.5 ppm | 0.1 ppm |
| PH ₃ | 0 - 20 ppm | 3 ppm | 10 ppm | 4 ppm | 2 ppm | 0.01 ppm |

*All alarm levels can be set using the WatchGas App

ACCESSORIES



Gas cylinder

Fixed flow regulator

External filter



SST Dock



SST RANGE TM 

SST4:
Four gas you
can trust

SST-MICRO & SST-MINI - MULTI GAS

Four Gas Device



APPLICATIONS

- Oil & Gas upstream
- Steel production
- Wastewater
- Ship building
- Telecommunications
- First responders
- Manufacturing
- Shipping
- Power generation

FEATURES AND BENEFITS



NFC

Near Field Communication built in as standard and allows for a wide range of solutions depending on your needs. Simply pair SST4 with the WatchGas App to manage your fleet, bump, calibrate, assign, or download event logs. See Tap & Go application note for more information on the benefits of NFC and what it can do for you.



SENSOR

Using the latest in Solid State Technology our H₂S, CO, O₂ and SO₂ offer stability and reliability over extreme temperatures and conditions. Toxic sensors have a smaller form factor and with the removal of liquid electrolyte provides a long-lasting sensor. A choice of 3 different LEL sensors allows the user to tailor the device to your application and allows longer runtimes compared to conventional technology.



DISPLAY

With the largest LCD in its category the SST4 display ensures information is displayed clearly and allows users to make quick decisions. Four gases can be displayed with clarity and shown in PPM and % vol. Correction factors can be set through the WatchGas App and allows for a one to one reading for the target gas required. With its Backlight it can be used in dark environments and will be illuminated in an alarm occasion.



RUGGED

Designed with the harshest environments in mind the SST4 offers an IP rating of 65-68. The casing is a double shot housing that gives extra robustness whilst not compromising on quality. The screen protectors located either side of the display are to protect the LCD from scratching and is required due to the smaller sensor profile.



ALERT

As a safety device it is essential that the device clearly notifies users of the presence of gas. The SST4 has a 95dB alarm at 30 centimetres which is the industry standard and is required in loud industrial environments. High, Low and TWA alarms can be configured by the customer and automatically updated directly on the device or through the SST-Dock or WatchGas App.



INNOVATION

In dirty and harsh environments that gas detectors are often used in many charging connectors become damaged. SST4 has been designed with induction charging allowing for simple and quick charging with no risk of cables and ports becoming damaged and failing.

As many industries move from single gas to a multigas approach it is important for end user adoption. The SST4 range is designed with simplicity, size and with the user in mind. With its compact yet rugged design the SST4 is there when you need it. From use in the hot temperatures of the steel industry or Hazmat user through to the extreme environments found in the Oil and Gas industry. With a wide range of user options, the SST4 can be tailored for a wide range of use cases and applications. Simple set up of the device by using the WatchGas App, calibration, and bump test records. With Compliance check it has never been easier to manage, maintain and ensure maximum up time of your fleet of devices.

SST-MICRO & SST-MINI SPECIFICATIONS

| | |
|---------------------------------------|--|
| Size | With Alligator clip SST4-Micro: 103.5mm x 63.3mm x 40mm SST4-Mini: 107.5mm x 63.3mm x 42mm Without Alligator clip SST4-Micro: 103.5mm x 63.3mm x 23mm SST4-Mini: 107.5mm x 63.3mm x 28mm |
| Weight | SST4-Micro: 184g SST4-Mini: 188g |
| Operating Temperature | H₂S: -40 to +60°C / -40 to +140°F CO: -40 to +60°C / -40 to +140°F O₂: -40 to +60°C / -40 to +140°F SO₂: -40 to +60°C / -40 to +140°F LEL LPC Low Power Catalytic: -40 to +60°C / -40 to +140°F LEL Catalytic Bead Sensor: -40 to +60°C / -40 to +140°F LEL NDIR: -40 to +60°C / -40 to +140°F |
| Humidity | 5% - 95% RH (non-condensing) |
| Typical battery life | Four Gas Device (SST-Micro): LEL LPC Low Power Catalytic – 48h Four Gas Device (SST-Mini): LEL Catalytic Bead Sensor – 13h Four Gas Device (SST-Mini): LEL NDIR – 200h |
| Induction Charger | 2-3 hours |
| Event logging | 100 events |
| Data logging | 6 months |
| IP | 65-68 |
| Communication | NFC |
| Calibration | 6 months as standard |
| Certifications & Approvals | Class I, Div. 1, Gr. A, B, C, D. ClassI, Zone 0, Gr. IIC ATEX: II 1G Exia IIC T4 Ga IECEx: Exia IIC T4 Ga European Conformity |
| Warranty | Two-year warranty as standard |

SENSOR SPECIFICATIONS

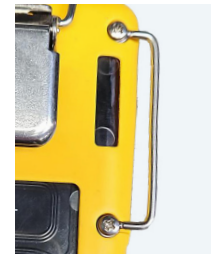
| SENSOR TYPE | RANGE | RESOLUTIONS | LOW ALARM | HIGH ALARM | TWA | STEL |
|---------------------------------------|------------|-------------|-----------|------------|--------|---------|
| O ₂ Oxygen | 0-25% Vol | 0.1% vol | 19.50% | 23.50% | N/A | N/A |
| LEL Low Power Catalytic | 0-100% LEL | 1% vol | 10% | 20% | N/A | N/A |
| LEL CAT LEL Catalytic Bead | 0-100% LEL | 1% vol | 10% | 20% | N/A | N/A |
| LEL Non-Dispersive Infrared Sensor | 0-100% LEL | 1% vol | 10% | 20% | N/A | N/A |
| CO Carbon Monoxide | 0-2000 PPM | 1 PPM | 35 PPM | 200 PPM | 35 PPM | 200 PPM |
| H ₂ S Hydrogen Sulphide | 0-500 PPM | 0.1 PPM | 5 PPM | 10 PPM | 5 PPM | 10 PPM |
| SO ₂ Sulphur Dioxide | 0-100 PPM | 0.1 PPM | 5 PPM | 10 PPM | 5 PPM | 10 PPM |

Factory alarm set points can be set to customer requirements using SST-Dock and WatchGas Mobile App.

ACCESSORIES



External filter
 PN: SST-MICRO-XFIL-10
 PN: SST-MINI-XFIL-10



Bar Strap
 PN: SST4-POUL-10



Cradle Charger
 PN: SST-IND-S



SST Dock

SST DOCK

Bump, Calibration and Configuration station compatible with full SST Range



The SST Dock is an automated test station that allows Bump and Calibration testing and is compatible with the full SST Range in one module. It has the capability to be connected via Wi-Fi, BLE or Cellular and allows for desk, wall and hard case mounted dependent on your application.

FEATURES AND BENEFITS



EASY SETUP

SST-Dock is designed with ease of use in mind. Easily assign gas cylinders with the NFC reader and this will input the Span Values, Lot Numbers and Expiry dates directly into the SST-Dock. Also with the touch screen display it allows you to configure the SST-Dock to tailor it to your needs. The SST-Dock provides easy unit set up features so no PC needed for product changes.



RAPID BUMP

SST-Dock enables three levels of bump testing. These levels are 50, 70 and 90% of gas and gives you the option to test units in seconds, saving you in test gas costs. These results are all saved in the SST-Dock and if connected can be shared via mail or seen in the WatchGas Software.



CONNECTIVITY

SST-Dock offers a wide range of connectivity. The docking station can be a standalone system and information can be sent via email to a printer or laptop or phone. If you want the system to be connected, then you can connect directly to a WI-FI network, or the device can be fitted with a Sim card allowing for connectivity to a cellular network. This makes sending reports and data super easy.



PLATFORM DESIGN

It was important for us and our customers to have a system that was designed to take all SST units. We have achieved this and with one module you can bump, calibrate, and configure the SST1, SST4 (Micro and Mini), SST-PUMP and SST-5. This reduces the size of the docking system and reduces costs of having individual modules.



LOW GAS NOTIFICATION

Docking Stations are a critical part of a site's operation and can't afford to be down due to gas running out. The SST-Dock comes with a pressure regulator that will indicate when gas is running low or coming to its expiry date. This means you can take a proactive approach and always ensure your systems have gas to allow for daily testing.



MOUNTING OPTIONS

We understand that different application requires docking stations to be located in a era of environments. The SST-Dock comes with brackets that allow for wall mounting and will hold one cylinder in a tidy fashion. It can also be tailored for desktop use or as a mobile device in a hard case and up to 100 calibrations can be done of one battery charge.

SOFTWARE

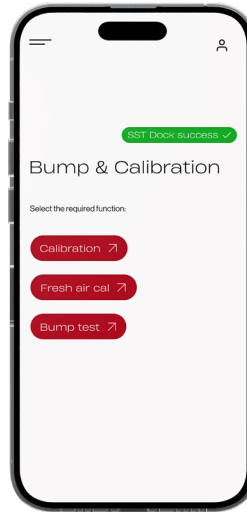
SST-Dock is Bump, Calibration and configuration station that is designed to carry out daily compliance checks of your gas detection fleet or for use as a service provider that have a large customer fleet to maintain. The SST Dock is compatible with SST1, SST4 (all models), SST4 Pump and SST5 meaning one docking solution for your entire fleet and reducing infrastructure costs.

SST-Dock also offers full flexibility, allowing for a stand-alone solution where the data can be captured and interrogated, either at a dock level or can be connected to the WatchGas cloud-based software. This software allows you to have a full overview of your fleet and be notified of non-compliances, from bump and calibration expiries, gas alarms or even showing when test gas is running low. With options for the system to be used on a desk, wall mounted or portably in a hard case giving you up to 100 calibrations from one charge it has never been easier to ensure the up time of your gas detection fleet.

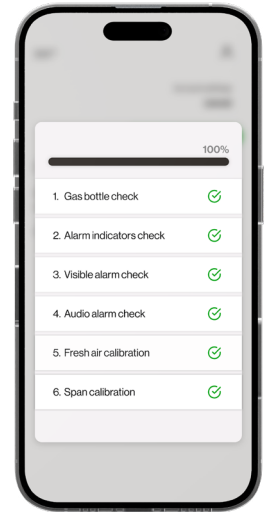
This compact yet rugged solution can be tailored from a simple bump test station through to a sophisticated connected test station giving you constant updates of your fleet health and compliance status.

SST DOCK SPECIFICATIONS

| | |
|---------------------------------------|--|
| Dimensions (LxWxH) | 28 x 21 x 10 cm (11 x 8.2 x 4 in.) |
| Weight | 1.8 kg (63.5 oz.) |
| Temperature | +5-40 °C |
| Humidity | 10% to 90% RH |
| Storage Temperature | 0-50 °C |
| Power Supply | 12 V 1,5 A |
| Real Time Clock | Yes, updateable |
| Data Storage | More than 1 year of operation |
| Connection capability | Wi-Fi, Cellular, BLE – Connected into the Cloud and WatchGas App |
| Gas inlets | Fresh air inlet, 2 Gas inlets and one purge |
| Testing Function | Bump Test, Calibration (optional), Device Configuration and Data Download. Also tests device Alarms, Visual LED's |
| Device Compatibility | One module compatible with SST Range |
| Certifications & Approvals | EMC Directive 2014/30/EU Low Voltage Directive 2014/35/EU FCC Part 15 RoHS Directive 2011/65/EU RED 2014/53/EU |
| Warranty | 2 years |



Home screen



Calibration

ACCESSORIES



Gas cylinder



Pressure sensor



Last-o-More



Hard case

COMPLIANCE KIOSK

Compliance, Fleet Health, Event Collection



The WatchGas Compliance Kiosk works as a terminal to allow the user to check in the gas detector providing a full overview of the device status and any unforeseen events. The WatchGas compliance Kiosk automatically sends all data to a designated software site. This provides a cost effective overview of fleet health, predictive maintenance, events and alarms.

Furthermore, the WatchGas Compliance Kiosk provides the capability to actively manage the detector settings and user assignments.

FEATURES AND BENEFITS



CONFIGURATION VERIFICATION

The Compliance Kiosk has the capability to check the gas detector settings such as function setting, alarm limits, and assigned User ID against a system reference file set up by the system administrator.

Allowing the system to validate that the unit is set up correctly and a calibration bump test has been performed for the company's safety process.



HEALTH CHECK

The Compliance Kiosk reads the product's health and reports it to the RTR Solution Compliance Watch, providing a unique preventive maintenance schedule and reducing downtime.

The data includes battery status, sensor status, hardware, and firmware status.



CONNECTIVITY

The Compliance Kiosk offers a wide range of connectivity options. It can be set up as a standalone system, where information can be sent via email to a printer, laptop, or phone. If you want the system to be connected, you can connect directly to a WI-FI network, or the device can be fitted with a Sim card to connect to a cellular network. This makes sending reports and data super easy.



ACTION CONFIRMATION

The Compliance Kiosk will alert the user if their detector needs any form of attention such as predictive maintenance, bump, or calibration. The system can verify if a User ID has been assigned to a gas detector and allow updates to be made that will automatically load onto that detector.



EVENT COLLECTION

The Compliance Kiosk will automatically download the event log from a gas detector, store it locally, and send it to the RTR Solution if activated (software sold separately), providing a quick and simple overview for management.



MOUNTING OPTIONS

We understand that different applications require equipment to be located in a variety of environments. The Compliance Kiosk comes with brackets that allow it to be tailored for wall mounting or desktop use.

COMPLIANCE KIOSK AND RTR SOLUTION

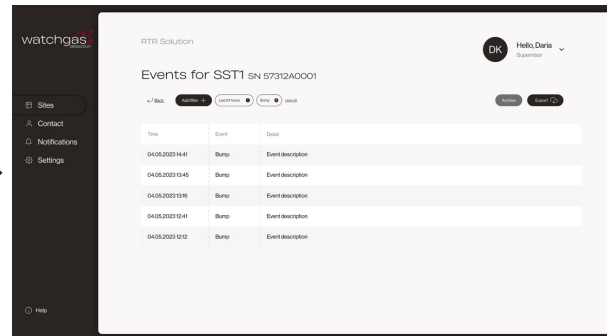
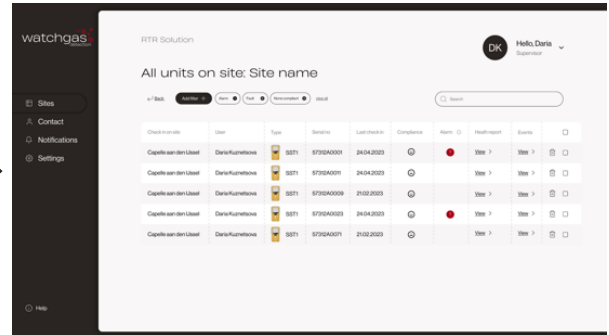
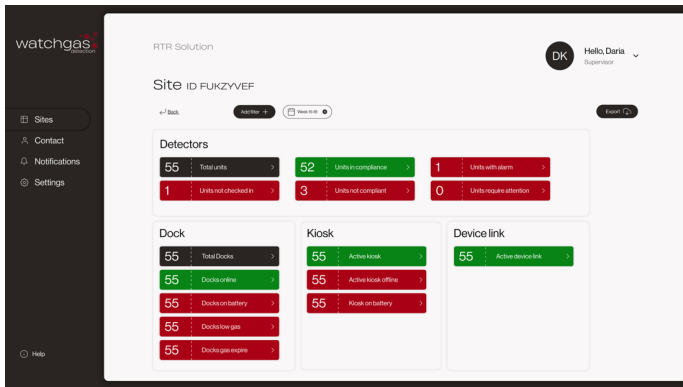
The Compliance Kiosk is designed to carry out compliance checks of your gas detection fleet or can be used by a service provider with a large customer base to maintain. The kiosk is compatible with the SST1, SST4 (all models), and the SST5. This means one kiosk can read your entire fleet and reduce your infrastructure costs. It allows users to facilitate regular check-ins without costly calibration or bump stations, to handle simple tasks such as detector location, compliance and if an alarm event has occurred.

What does a safety manager want to know:

- Do the monitors work and are they being used?
- Did we have any alarms on-site?
- Are we following the company's safety procedures?
- What is the status of my fleet?
- Will I have unforeseen expenses?



Compliance Kiosk pushes data to RTR solution



COMPLIANCE KIOSK SPECIFICATIONS

| | |
|---------------------------------------|--|
| Dimensions (LxWxH) | 28 x 21 x 4 cm (11 x 8.25 x 1.5 in) |
| Weight | 800 g (1.76 lb) |
| Temperature | +5-40 °C (40-104° F) |
| Humidity | 10% to 90% RH |
| Storage Temperature | 0-50 °C (32-122° F) |
| Power Supply | USB C 5V |
| Real Time Clock | Yes, updateable |
| Data Storage | More than 1 year of operation |
| Connection capability | Wi-Fi, Cellular, BLE – Connected into the RTR COMPLIANCE WATCH |
| Testing Function | Device status |
| Device Compatibility | One module compatible with SST Range |
| Certifications & Approvals | EMC Directive 2014/30/EU Low Voltage Directive 2014/35/EU FCC Part 15 RoHS Directive 2011/65/EU RED 2014/53/EU |
| Warranty | 2 years |

FOR MORE INFORMATION

www.watchgas.com
info@watchgas.com

www.watchgasusa.com
info@watchgasusa.com